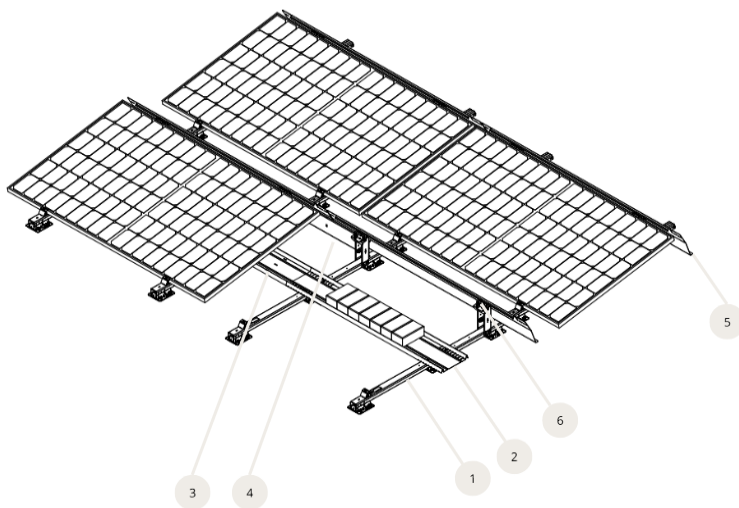
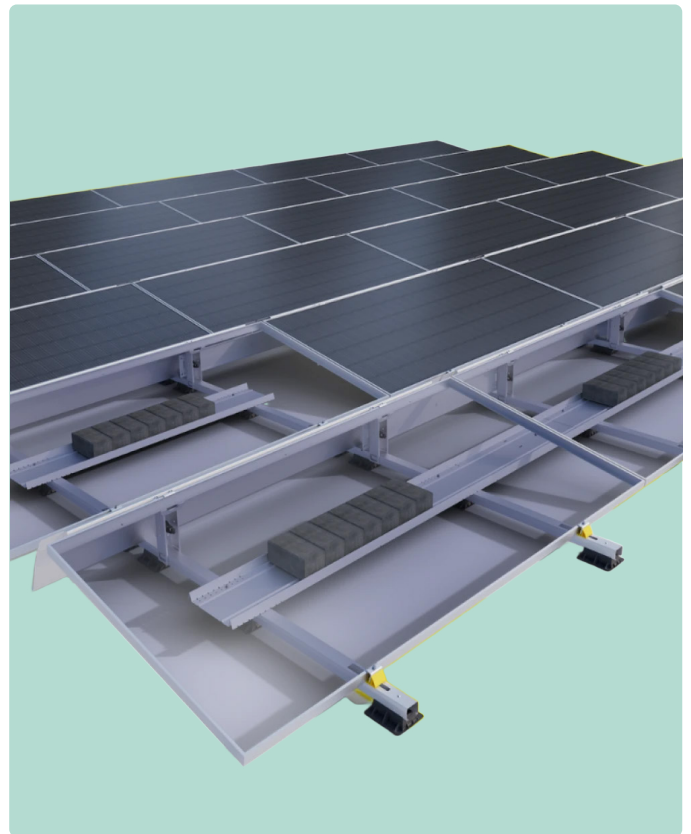


Flow

Universal series

Autarco's Flow mounting system has been designed keeping an ease of installation in mind. It provides a sophisticated yet simple, quick but proper installation. Suitably designed for new generation of larger solar panels, it is ideal for large or small installations. Thanks to its smart and stable construction, it allows for ultra-fast assemblies whilst ensuring the solar panels are safely supported.

- + 15-year product warranty
- + Landscape orientation
- + One tool required for installation
- + Install up till 5 degree surface inclination
- + Suitable for situations with high wind and snow loads
- + Automatic potential equalisation (NEN1010)
- + Linked fields up to 50 metres possible
- + Pre-assembled components with fewer packaging materials



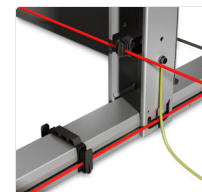
Rest panel on mounting and easily access clamps



Easy to set up in perpendicular orientation



Integrated cable management



System components

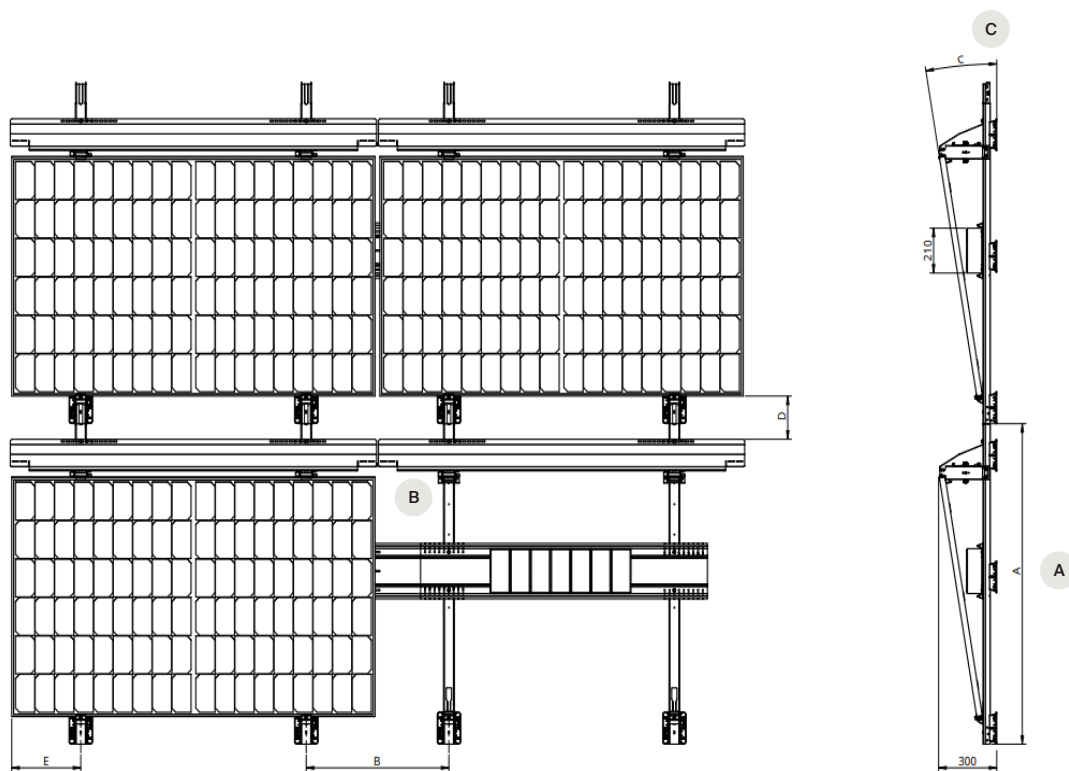
| | | | |
|--|---|--------------------------------|----------------------------------|
| | 1 | Base assembly (with connector) | M3.FBU-1500 |
| | 2 | Ballast plate | M3.FBP-1508 |
| | 3 | Ballast connector | M3.FBC-1130 |
| | 4 | Connector plate | M3.FCP-750/1050 |
| | 5 | Wind plate | M3.FWP-1925 / 2100 / 2275 / 2450 |

Fastenings

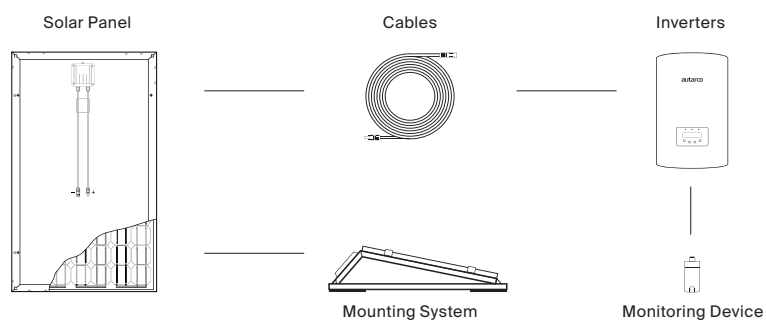
| | | |
|--|----------------|----------------------------------|
| | Wind plate | M3.FWP-1925 / 2100 / 2275 / 2450 |
| | 6 Top clamp | M3.FTC |
| | 7 Bottom clamp | M3.FBC |
| | Short screw | M3.MSS |

Optional components

| | | |
|--|-------------|-------------|
| | Sizing tool | M3.FST-1560 |
|--|-------------|-------------|



| Autarco panel series | | TBU | TBA | TBN | TBQ |
|-------------------------|-----------------|--------------------------------------------------------------------------|-------------|-------------|-------------|
| No. of Cells/Wafer size | | 54/210R | 66/210R | 72/182 | 78/182 |
| A | Base assembly | M3.FBU-1500 | M3.FBU-1500 | M3.FBU-1500 | M3.FBU-1500 |
| B | Connector plate | M3.FCP-1050 | M3.FCP-1050 | M3.FCP-1050 | M3.FCP-1050 |
| C | Module angle | 10° | 10° | 10° | 10° |
| Panel length (mm) | | 1960 | 2382 | 2278 | 2465 |
| Panel width (mm) | | 1134 | 1134 | 1134 | 1134 |
| Mechanical Load | | 5400 Pa (front) / 2400 Pa (back) | | | |
| Material | | Magnelis®, aluminium, stainless steel | | | |
| Suitable roof types | | Flat roofs (Bitumen, PVC, EPDM, TPO); Up to 5 degree surface inclination | | | |



The specifications contained in this datasheet may deviate slightly from our actual products due to on-going product improvement and are subject to change at any time without prior notice.