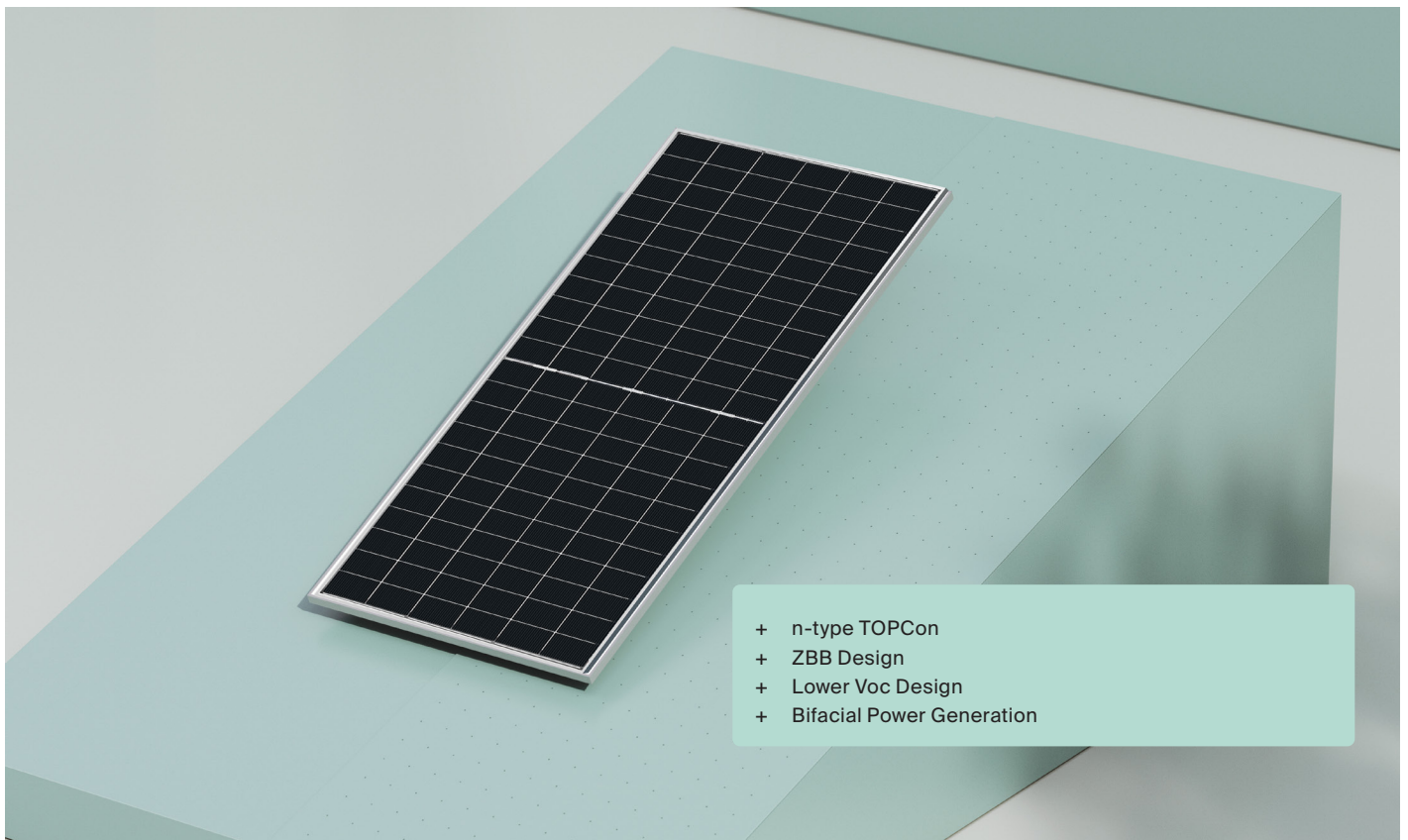


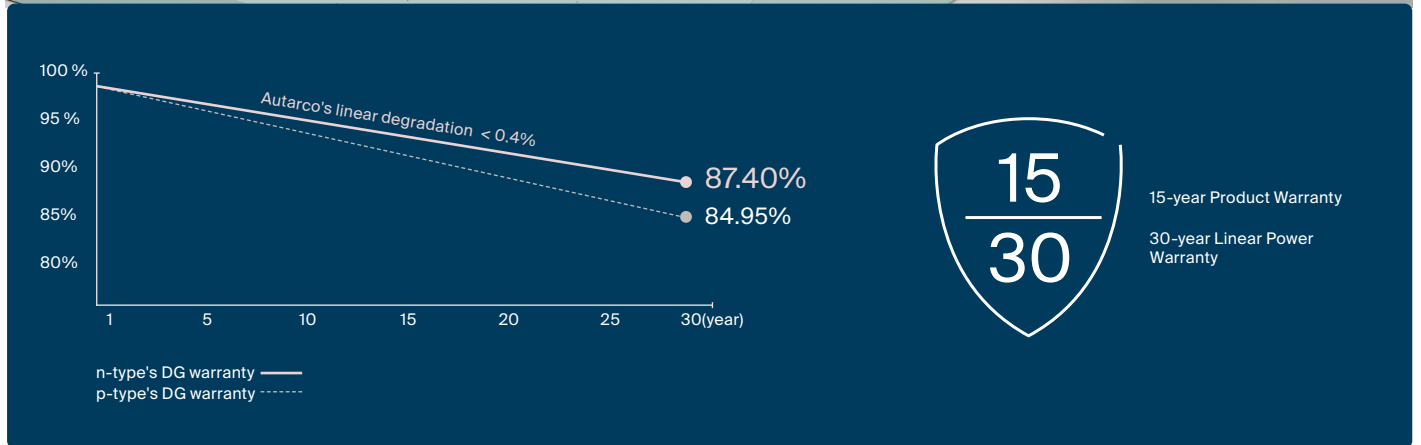
# TBA

## Series solar panels

Reach full potential



- + n-type TOPCon
- + ZBB Design
- + Lower Voc Design
- + Bifacial Power Generation



# 625~650W

Power Range

# 0~+3W

Power Sorting

# 24.1%

Max Module Efficiency

# ≤ 1.0%

First Year Power Degradation

# ≤ 0.4%

Year 2-30 Power Degradation

## Electrical specification

STC: Irradiance 1000W/m<sup>2</sup>, Cell Temperature 25 °C, AM=1.5

Rated output (Pmpp/Wp)	625	630	635	640	645	650
Open circuit voltage (Voc/V)	49.19	49.34	49.42	49.57	49.72	49.87
Short circuit current (Isc/A)	16.19	16.27	16.35	16.42	16.50	16.58
Rated voltage (Vmpp/V)	41.69	41.82	41.86	41.99	42.11	42.24
Rated current (Impp/A)	14.99	15.07	15.17	15.24	15.32	15.39
Module efficiency	23.1%	23.3%	23.5%	23.7%	23.9%	24.1%

BNPI: Irradiance front 1000W/m<sup>2</sup>, rear 135/m<sup>2</sup> Cell Temperature 25 °C, AM=1.5

Rated output (Pmpp/Wp)	689.1	694.6	702.3	707.8	713.4	718.9
Open circuit voltage (Voc/V)	49.20	49.35	49.43	49.58	49.73	49.88
Short circuit current (Isc/A)	17.90	17.99	18.13	18.21	18.30	18.38
Rated voltage (Vmpp/V)	41.70	41.83	41.87	42.00	42.13	42.25
Rated current (Impp/A)	16.52	16.60	16.77	16.85	16.93	17.01

## Temperature ratings (STC)

Temp. coefficient (Pmpp)	-0.29%/°C
Temp. coefficient (Isc)	+0.043%/°C
Temp. coefficient (Voc)	-0.25%/°C

Nominal module operating temperature (NMOT) 42 °C (+/- 2 °C)

## Operating parameters

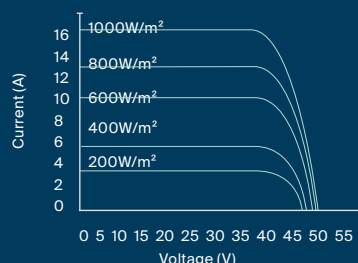
Junction Box IP rating	IP 68
Max. series fuse rating	35 A
Max. system voltage (IEC/UL)	1500V <sub>DC</sub>

## Mechanical specifications

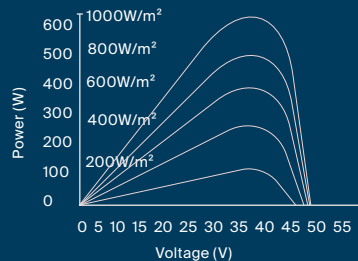
Outer dimensions (L x W x H)	2382 x 1134 x 30 mm
Cell type	182 x 210 mm n-type mono-crystalline
No. of half-cells	132 (6*22)
Frame technology	Aluminum, Silver anodized
Front / Back glass	Front / Back: 2.0 + 2.0 mm glass
Cable length (IEC/UL)	1200 mm
Cable diameter (IEC/UL)	4 mm <sup>2</sup> / 12 AWG
① Max. mechanical test load	5400 Pa (front) / 2400 Pa (back)
Connector type (IEC/UL)	Stäubli MC4-EVO2 (Standard)
Operating temperature	-40°C to 85°C
Fire performance	Class A (IEC61215)
Module weight	31.65 kg
Packing unit	36 pcs / box
Weight of packing unit	1190 kg
Modules per 40' HQ container	648 pcs

## Curve

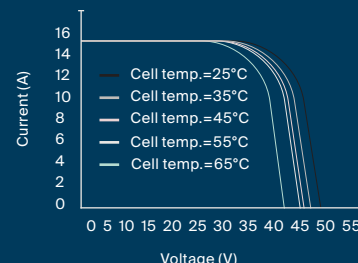
### Current-Voltage (635W)



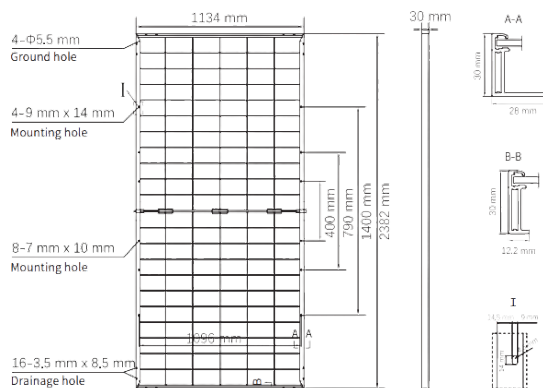
### Power-Voltage (P-V) (635W)



### Current-Voltage (445W)



## Solar panel



① Refer to Autarco installation manual or contact technical department. Maximum Mechanical Test Load=1.5×Maximum Mechanical Design Load.

© Autarco Group B.V. Reserves the right of final interpretation. Please contact our company to use the latest version for contract.